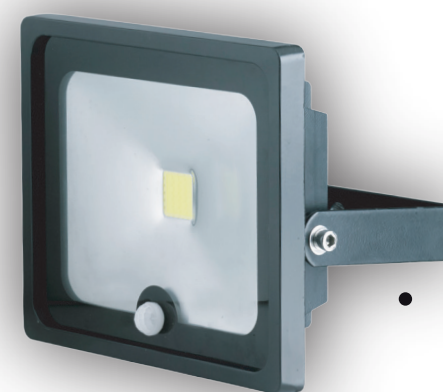

SL1-C20-B


Contents:
1x Light
1x Wall bracket
2x Screws & wall plugs
Instruction Manual
1x Hex key for bracket adjustment
1.5mm, 3-core flex cable pre-fitted to the device

Required:
Drill & drill bits for wall mounting
Terminal screwdriver for wiring

| | | |
|--|--|-------------------------|
| smartwares <small>SAFETY & LIGHTING</small> Broekakkerweg 15 5126 BD Gilze The Netherlands WWW.SMARTWARES.EU | NL : 0900-2088888 Lokaal tarief BE : 070-233031 (NL) Lokaal tarief : 0800-97370 (FR) Gratuit | CUSTOMER SERVICE |
| | FR : 0825 560 650 15ct/min DE : +49 (0) 1805 010762 14ct/Min. dt. Festnetz, Mobil max. 42ct/Min | |
| | UK : +44 (0) 345 230 1231 ES : +34 938427589 | |
| | | |

| | | | |
|--------------------|------|--------------------------------------|----------------------|
| 1500lm | IP65 | 0s | cool white ±6400K |
| 30.000h | | | |
| on off ± 15000x | | 220-240V AC 50Hz -10°C ~ +50°C | Ra ≥ 65 |
| | | 1m | |

Technical Support : 0345 230 1231 (local rate)
 Monday to Friday 10am till 4pm except Thursdays
 12.30pm till 4pm.

DO NOT OPEN THE DEVICE, THIS WILL VOID THE WARRANTY
 This device is pre-set and cannot be adjusted.

Operation period: Night only
 PIR angle of detection: 100°
 PIR range of detection: 5 metres
 Light on time after activation: Approximately 4 minutes

IMPORTANT

When powered on from the mains the light will turn on for approximately 4 minutes. Avoid activating the motion sensor during this time. Should the light remain on for more than 6 minutes then motion is being detected, turn off the light for 10 seconds and on again. Once light goes out it will not turn back on until night time and motion is detected.

TIP: Cover the light & PIR with a towel to avoid motion detection. Turn on the light and allow it to turn off after 4 minutes then remove the towel.

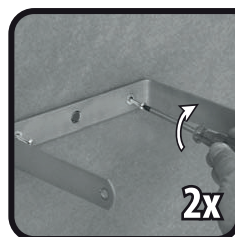
IMPORTANT

The light will remain on while motion is being detected, once motion stops the timer will begin and after approximately 4 minutes of no detection the light will turn off. Should motion be detected again the timer will reset.

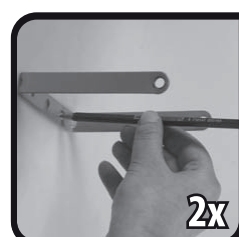
The light will not activate during daylight. Please wait until night time before fully testing.



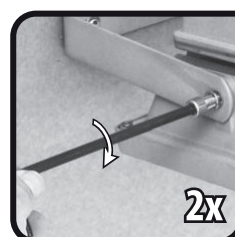
1. Using Hex key provided remove wall bracket from the device



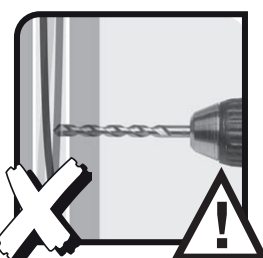
4. Using fixings supplied secure the wall bracket to the wall ensuring it is secure and fixings are tight.



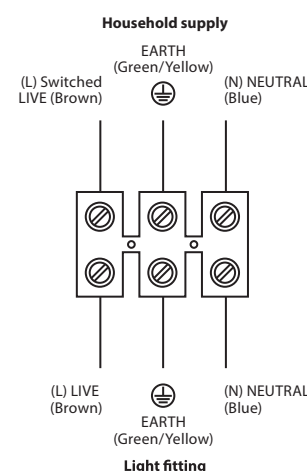
2. Select the ideal position for wall mounting, paying attention to product specification. Use wall bracket as a template, mark holes.



5. Attach the device onto the wall bracket, check the angle of the device is suitable and tighten the fixings using the Hex key provided.



WARNING
Be careful when drilling to ensure no cables or pipework may be affected.
Ensure correct drill is used suitable for wall fixings

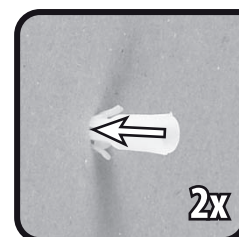


6. Wiring.
 Drill a hole into the wall and feed the supplied cable through the wall into the property.

If connecting the power externally please ensure a suitable outdoor electrical connection is made.

Connect Live (Brown wire) to mains supply
 Neutral (Blue wire) to Neutral supply
 Earth (Yellow / Green) to Earth supply

All wiring must be in accordance with IEE Wiring Regulations 17th Edition.
 If in doubt contact a local qualified electrician



3. Insert wall plugs into the drilled hole. The hole needs to be deep enough to contain the entire wall plug. Tap gently into the hole for a snug fit.

GB SAFETY AND MAINTENANCE INSTRUCTIONS

- Make sure that all electric connections and connection cables meet the pertaining regulations and are in conformity with the operating instructions.
- Do not overload electrical outlets or extension cords, fire or electric shocks can be the result
- Please contact an expert in case you have any doubts about the mode of operation, the safety or connecting the appliances.
- Keep all parts away from young children's reach
- Do not store this item on wet, very cold or warm places, this can damage the electronic circuit boards.
- Avoid dropping or shocks, this can damage the electronic boards
- Repairs or opening of this item may only be performed by an authorised workshop.

DO NOT open this device, this device is maintenance free and contain no user servicable parts.

The Guarantee becomes void if the device is opened.

Maintenance

Only clean the outside of the devices with a soft, dry cloth or a brush. Prior to cleaning, remove the devices from all voltage sources.
 Do not use any carboxylic cleaning agents or petrol, alcohol or similar. These attack the surfaces of the devices. Besides, the vapors are hazardous to your health and explosive. Do not use any sharp edged tools, screw drivers, metal brushes or similar for cleaning.



GB CORRECT DISPOSAL OF PRODUCT

(Waste Electrical & Electronic Equipment)
 This marking on the product or its literature indicates the product should not be disposed with other household waste at the end of its serviceable life.

To prevent possible harm to the environment or human health from uncontrolled waste disposal, please separate this product from other waste types and recycle it responsibly to promote the sustainable reuse of material resources. Household users should contact either the retailer where they purchased this product, or their local government to find out where and how to recycle this product in an environmentally friendly way. Business users should contact their supplier and check the terms and conditions of the purchase contract. This product should not be mixed with other commercial waste for disposal. Dispose of used batteries to one of a designated collection points. If the battery is built into the product, open it and remove the battery.