 This luminaire contains built-in LED lamps.


The lamps cannot be changed in the luminaire

smartwares® SL1-B10B  
SL1-B20B  
SL1-B30B

~~A++~~  
~~A~~  
A  
~~B~~  
~~C~~  
~~D~~  
~~E~~

LED

874/2012

 Diese Leuchte enthält eingebaute LED-Lampen.


Die Lampen können in der Leuchte nicht ausgetauscht werden.

smartwares® SL1-B10B  
SL1-B20B  
SL1-B30B

~~A++~~  
~~A~~  
A  
~~B~~  
~~C~~  
~~D~~  
~~E~~

LED

874/2012

 Ce luminaire est composé des lampes à LED intégrées.


Les lampes de ce luminaire ne peuvent pas être changées.

smartwares® SL1-B10B  
SL1-B20B  
SL1-B30B

~~A++~~  
~~A~~  
A  
~~B~~  
~~C~~  
~~D~~  
~~E~~

LED

874/2012

 Deze armatuur bevat ingebouwde LED-Lampen.

In de armatuur kunnen de lampen niet worden vervangen.

smartwares® SL1-B10B  
SL1-B20B  
SL1-B30B

~~A++~~  
~~A~~  
A  
~~B~~  
~~C~~  
~~D~~  
~~E~~

LED

874/2012

smartwares® Europe	NL: 088 5940501	Lokaal tarief
	BE: 078 481094(NL)	Lokaal tarief
Jules Verneweg 87	FR: 0825 560 650	Tarif local
5015 BH Tilburg	DE: +49 (0) 1805 010762	
The Netherlands	14C/Min. dt. Festnetz	
service@smartwares.eu	UK: +44 (0) 345 230 1231	
	ES: +34 938427589	

CUSTOMER SERVICE

# smartwares®



SL1-B10B\_10.040.02

SL1-B20B\_10.040.03

SL1-B30B\_10.040.04



INDOOR AND OUTDOOR



MOTION SENSOR

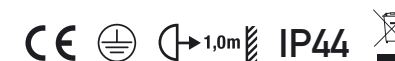


SLIM DESIGN

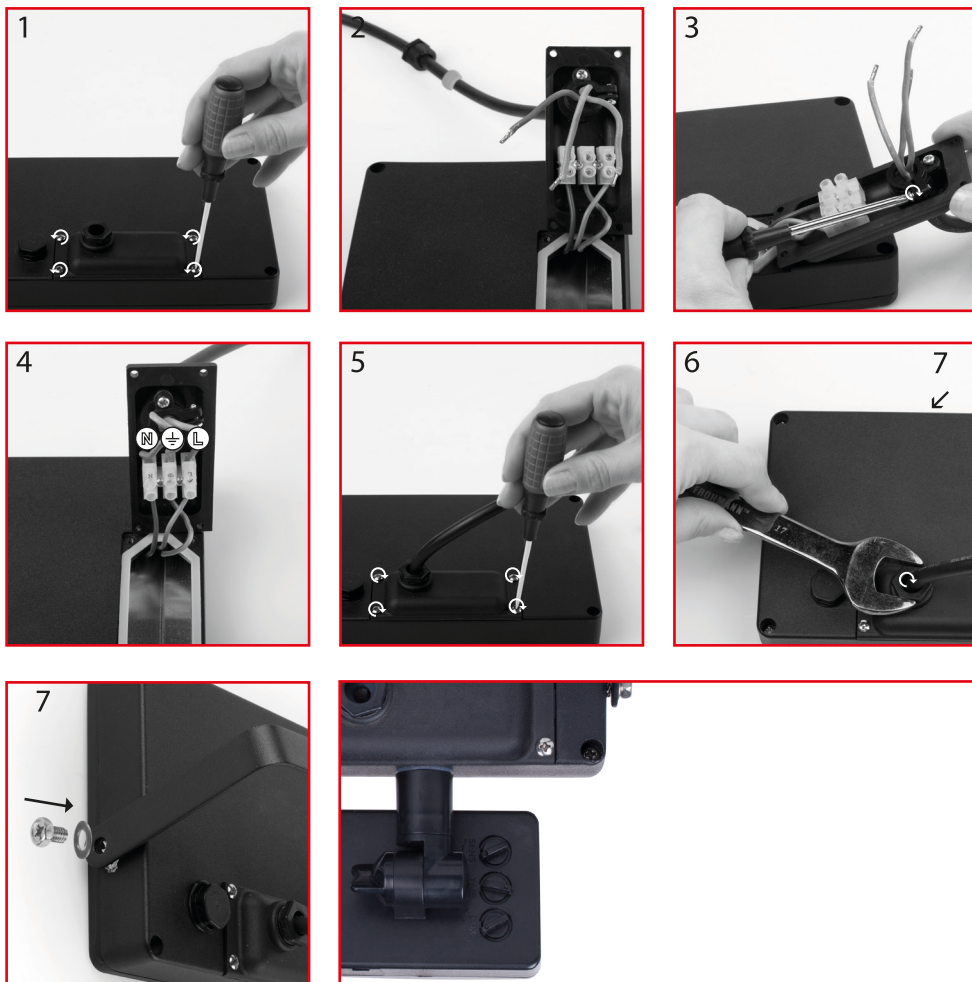
## LED slim security light

GB LED slim security light DE LED slim sicherheitslicht PL Wąskie oświetlenie ochronne LED  
IT Luce LED sicura e sottile NL LED slim beveiligingslamp FR Eclairage LED de securite  
intelligent ES Luz de seguridad LED plana SV LED smal säkerhetsbelysning  
TR LED ince güvenli lambasi PT luz de segurança LED fina

SL1-B10B\_10.040.02  
SL1-B20B\_10.040.03  
SL1-B30B\_10.040.04



# SL1-B10B/SL1-B20B/ SL1-B30B



	SL1-B10B / 10.040.02	SL1-B20B / 10.040.03	SL1-B30B / 10.040.04
POWER	220-240V~ 50Hz	220-240V~ 50Hz	220-240V~ 50Hz
WATTAGE	10W	20W	30W
LUMINOUS FLUX	650LM	1300LM	1950LM
COLOUR TEMPERATURE	±4000 K	±4000 K	±4000 K
CRI	>75	>75	>75
PROTECTION CLASS	IP44	IP44	IP44
ENERGY CLASS	A	A	A
ISOLATION CLASS	I	I	I
CURRENT (mA)	0,11A	0,15A	0,13A
LIFETIME	25.000h	25.000h	25.000h
DIMMABLE	NO	NO	NO



- (GB)** The fixture is splash-proof.
- (NL)** Het armatuur is spatwaterdicht.
- (F)** L'armature est étanche aux projections d'eau.
- (D)** Die Armatur ist spritzwasserdicht.
- (N)** Armaturet er beskyttet mot sprut.
- (S)** Armaturen är tät mot stänkvatten.
- (DA)** Armaturet er stænktæt.
- (FIN)** Valaisin on roiskevedenpitävä.
- (PL)** Urządzenie jest bryzgoszczelne.
- (RUS)** Осветительная арматура является брызгозащитенной.
- (BG)** Осветителното тяло е устойчиво на намокряне.
- (H)** A szerelvény fröccsenésálló.
- (RO)** Corpul de iluminat este rezistent la stropire.
- (SK)** Zariadenie je chránené proti postriekaniu.
- (HR)** Svjetiljka je zaštićena protiv štrcanja vode.
- (CZ)** Zařízení je chráněno proti postřiku.
- (SLO)** Nosilec je odporen proti curkom.
- (I)** La lampada è protetta contro gli spruzzi d'acqua.
- (P)** A ferragem de conexão é a prova de salpicos.
- (E)** El montaje está protegido contra salpicaduras.
- (GR)** Η εφαρμογή είναι αδιάβροχη στα πιτσιλισματα.
- (TR)** Tertibat sýcrmalara karbý dayanýklýdýr.
- (EN)** Protection class 1: the fitting must be earthed.
- (NL)** Beschermklasse 1, het armatuur moet geaard worden.
- (FR)** Classe de sécurité 1, l'armature doit être mise à la terre.
- (DE)** Schutzklasse 1, die Armatur muss geerdet werden.
- (NO)** Beskyttelsesklasse 1: armaturet må jordes.
- (SV)** Skyddsklass 1, armaturen måste jordas.
- (DA)** Beskyttelsesklasse 1, armaturet skal have jordforbindelse.
- (FI)** Suojausluokka 1, valaisin pitää maadoittaa.
- (PL)** Klasa zabezpieczenia 1: urządzenie musi być uziemione.
- (RU)** Класс защиты 1: арматура должна быть заземлена.
- (BG)** Защита от клас 1: осветителното тяло трябва да е заземено.
- (HU)** 1. védelmi osztály: a szerelvény földelhető.
- (RO)** Clasă 1 de protecție: corpul de iluminat trebuie împământat.
- (SK)** Trieda ochrany 1: zariadenie musí byť uzemnené.
- (HR)** Klasa zaštite 1: svjetiljka mora biti uzemljeno.
- (CS)** Třída ochrany 1: zařízení musí být uzemněno.
- (SL)** Zaščitni razred 1: nosilec senzorja je potrebno ozemljiti.
- (IT)** Classe di protezione 1, la lampada deve avere la messa a terra.
- (PT)** Classe 1 de protecção: a ferragem de conexão deve ser ligada à terra.
- (ES)** Protección de Clase 1: el montaje debe estar conectado a tierra.
- (EL)** Προστατευτικό γυαλί 1: η εφαρμογή πρέπει να γειωθεί.
- (TR)** Emniyet türü 1: Tertibat topraklanmalıdır.