



smartwares®

smart wireless alarm system

COMPLETE APP CONTROLLED

SECURE & MONITOR



Slim line SURVEILLANCE

ANDROID APP ON
Google play

Available on the iPhone
App Store

CONTENT

- Main unit
- Motion detector
- Door/Window detector
- Remote
- Adaptor & Batteries
- Plugs & Screws
- Welcome Card

HA701IP

Manual 10.016.58_HA701IP

SMART ALARM SYSTEM



Operating distance 75M



Batteries included



Easy and Quick to install



Anti Jamming



100 accessories extendable

ANDROID APP ON

Google play

Available on the iPhone

App Store

GB SMART ALARM SYSTEM 3 IN 1

- * Secure and monitor your home, wherever you are
- * Connect directly to internet
- * Easy to install, in 12 minutes
- * Complete sabotage protected
- * Extendable up to 100 accessories/zones
- * Receive alarm messages on your smartphone / email
- * Automatically, warn your friends or family
- * Suitable for home, apartments, small office or shop
- * Built-in siren up to 90dB
- * Battery backup
- * Low battery indicator
- * Secure and monitor your home from any computer or smartphone (IOS, Android), wherever you are!

Frequency	: 868.35MHz
Transmission power	: <10mW
Transmitting range	: Up to 75m (in open space)
Extendable	: Up to 100 accessories
Power adaptor	: 12V DC, 2A
Backup power	: 6x 1,5V DC Battery AA (incl.)
Alarm volume	: 90dB/1m
Remote battery	: CR2032 type, 3V Lithium (incl.)
Magnetic switch battery	: 3V 900mAh Lithium CR2 (incl.)
PIR detector battery	: 3V 900mAh Lithium CR2 (incl.)
PIR detection	: 110° x 10m
Internet connection	: RJ45 LAN - internet cable (incl.)
Operating temperature	: -10°C ~ 50°C

Welcome to the world of our Smart Home Wireless Alarmsystem HA701IP

We will guide you during the installation trip; step by step! The trip will start with unpacking, sorting, screwing and downloading, and will be accompanied by screenshots, so that you see what you get! We wish you a pleasant trip!

Step 1:

Unpack all the products and sort them on the table!

Step 2:

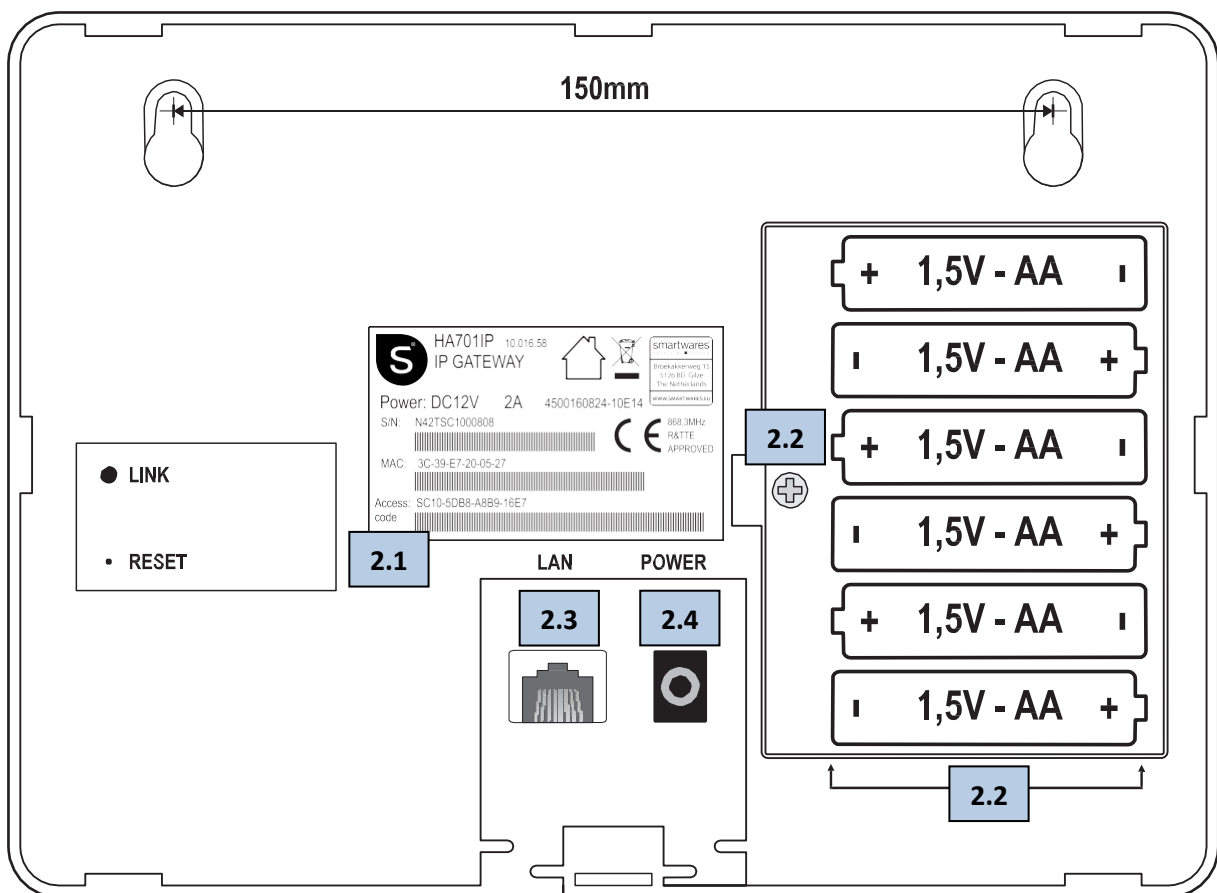
2.1 Write down the Access Code information of the back of the Gateway, on this field of the manual:

_____ - _____ - _____ - _____ The Code is needed for system login.

2.2 Open the battery compartment at the back side and install 6 x 1,5 V AA, close it again.

2.3 Plug in the internet (LAN) cable and the adaptor (POWER) in the contacts at the back.

2.4 Plug the other side of the internet cable in your router, and the adaptor in a powersocket.



Step 3:

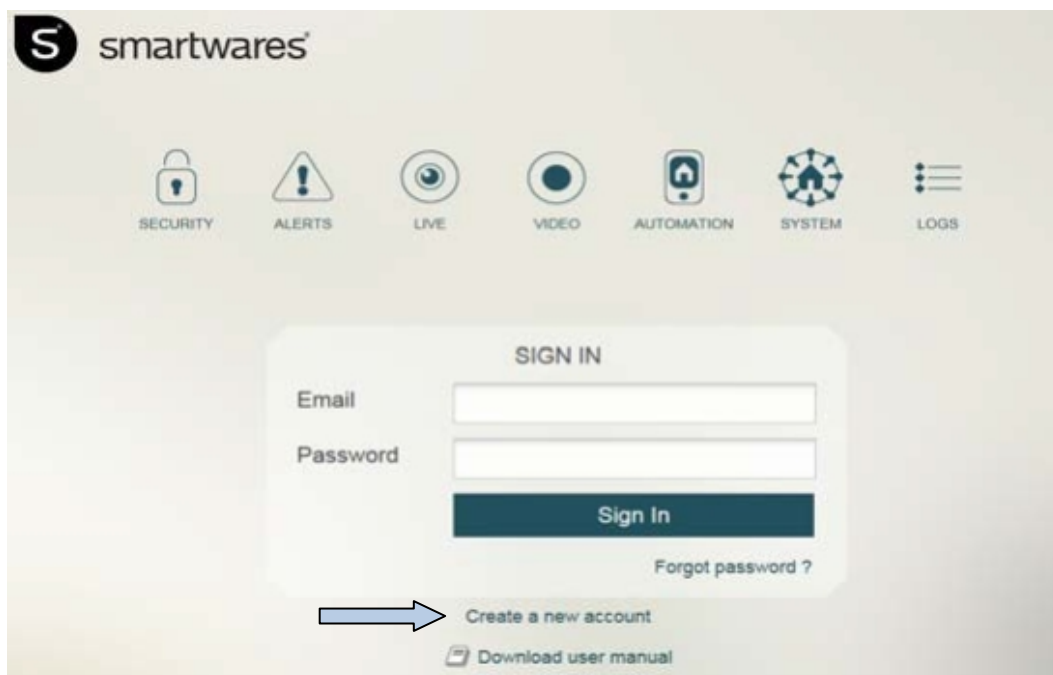
Remove the insulating films on the back of the Motion Sensor and Magnetic Contact Sensor. Remove the insulating films on the side of remote.

smartwares[®] Slim line SURVEILLANCE



Step 4:

Open on your computer again: www.mysecurity.smartwares.eu Click on "CREATE A NEW ACCOUNT"



Step 5:

Click on "CREATE A NEW ACCOUNT"

Step 6:

Confirm your country. Fill in your email address which will also be your accountname. Fill in the password you want to use for this account. Confirm the password. Click on Submit



CREATE A NEW ACCOUNT

Confirm your country :
Netherlands

Choose your login (your email address) :
L@_ x

Choose a password :

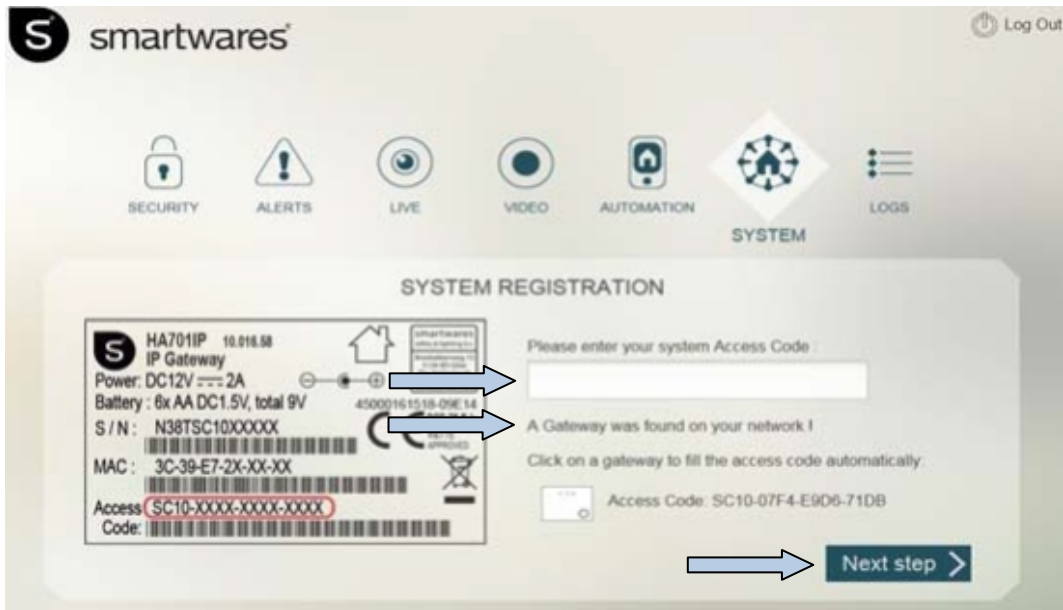
Confirm your password :

Submit

Step 7:

You are now in System Registration: a gateway is found on your network!

Fill in the code and click on NEXT STEP



SYSTEM REGISTRATION

HA701IP 10.016.58
IP Gateway
Power: DC12V --- 2A
Battery : 6x AA DC1.5V, total 9V
S / N : N38TSC10XXXXX
MAC : 3C-38-E7-2X-XX-XX
Access Code: SC10-XXXX-XXXX-XXXX

Please enter your system Access Code :

A Gateway was found on your network !
Click on a gateway to fill the access code automatically.
Access Code: SC10-07F4-E9D6-71DB

Next step >

Step 8:

The system will congratulate you, and asks which name you want to give your system.



Step 9:

The software of you system aske for a update; click on "START UPGRADE"



Congratulations: Your system is connected and up to date: Click on "TERMINATE"



Step 10:

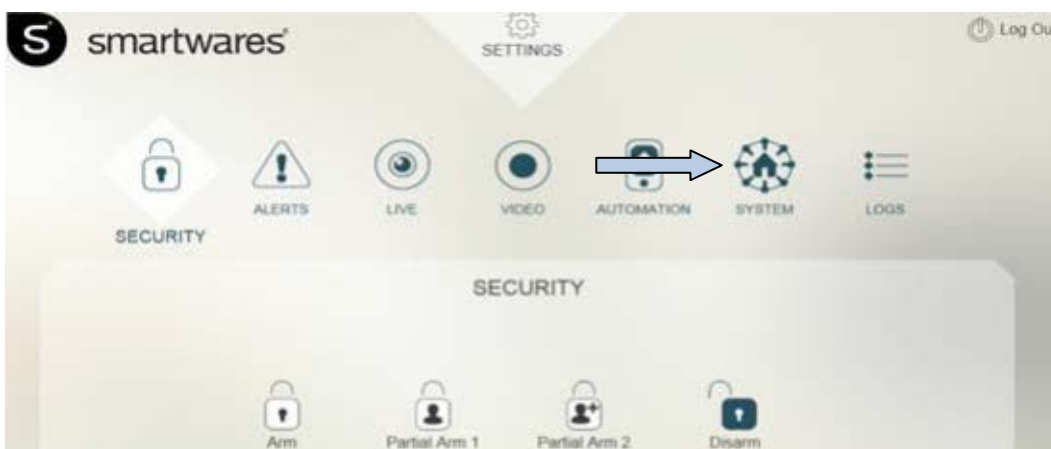
You are in the main menu of the system!

smartwares[®] Slim line SURVEILLANCE



Step 11:

Connect and check the Motion Sensor, Magnetic Sensor and Remote! Click on "System"



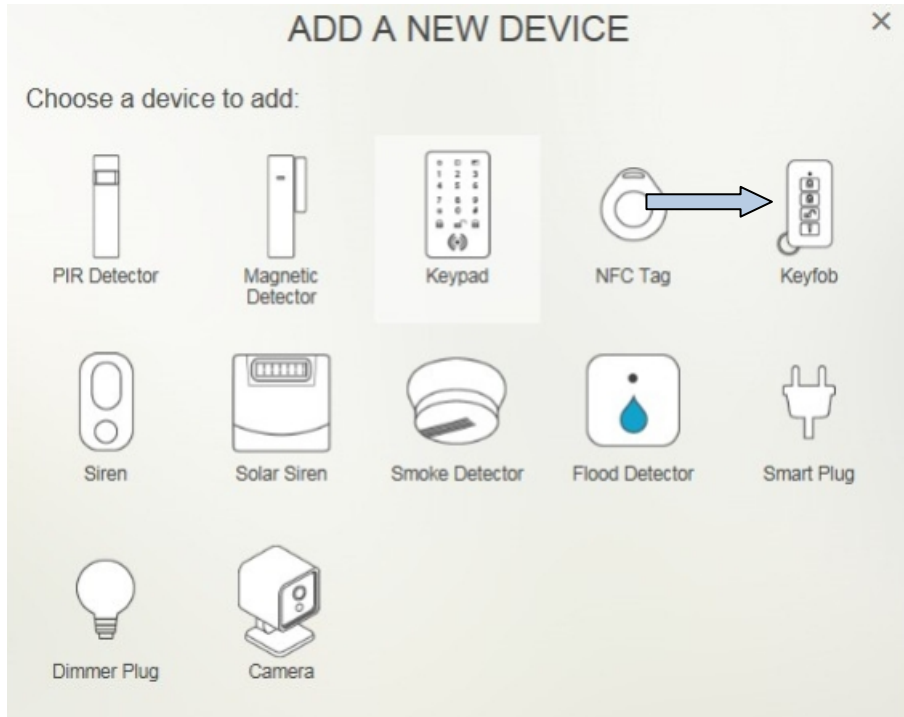
Step 12:

We will now add the Sensors and the Remote! Click on "+ add a new device"



Step 13:

Select the device you want to add, for example Remote, and click on it. Not all device you see now are already available! Some are under development



Step 14:

Now you push on one of the buttons of the remote within the count down time!



Step 15:

You will get a confirmation that it is learned success full. When it is already connected, you will get the message that it is already known. Now you do the same for the Motion Sensor and the Magnetic Contact Sensor. All connected devices are shown in the screen. The main Unit is called Internal Siren



Step 16:

Decide where you want to mount your main unit! We advise to mount it out of sight, so that in case of burglary it will not be easily found! You need to connect the internet (LAN) cable and plug in the adaptor! Use the template paper to mark the positions of the screws on the wall. Leave the screw head protruding for about 7mm so it can push the tamper switch (on the back of the Gateway) into place.

Step 17:

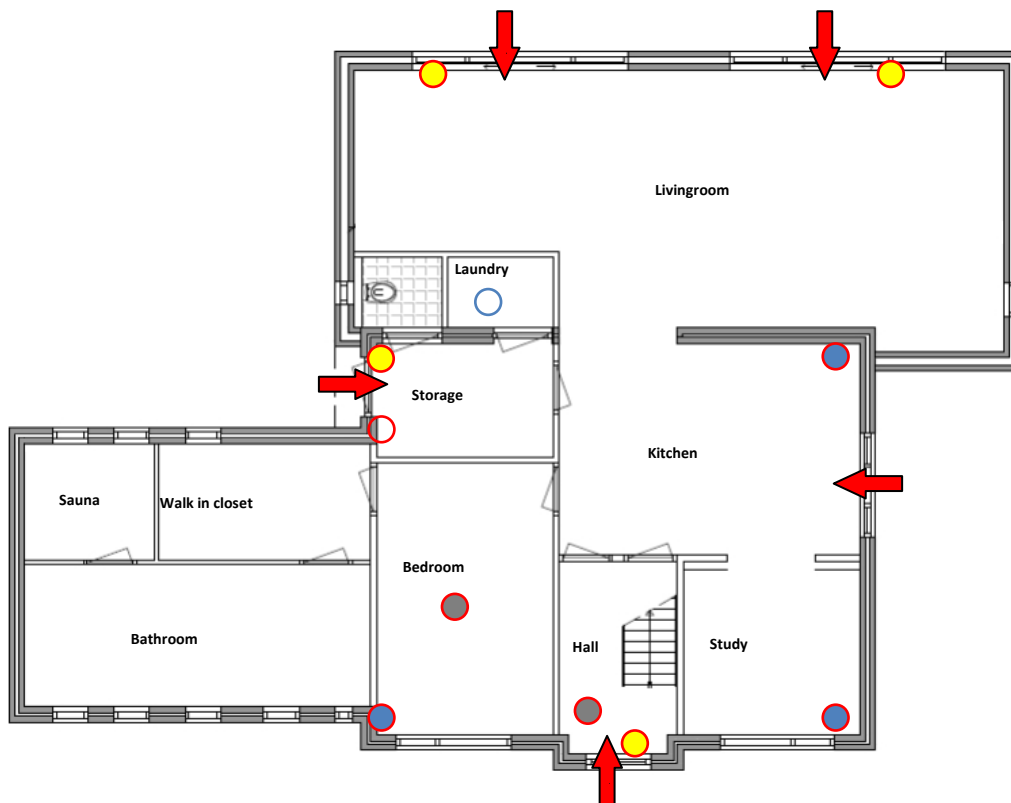
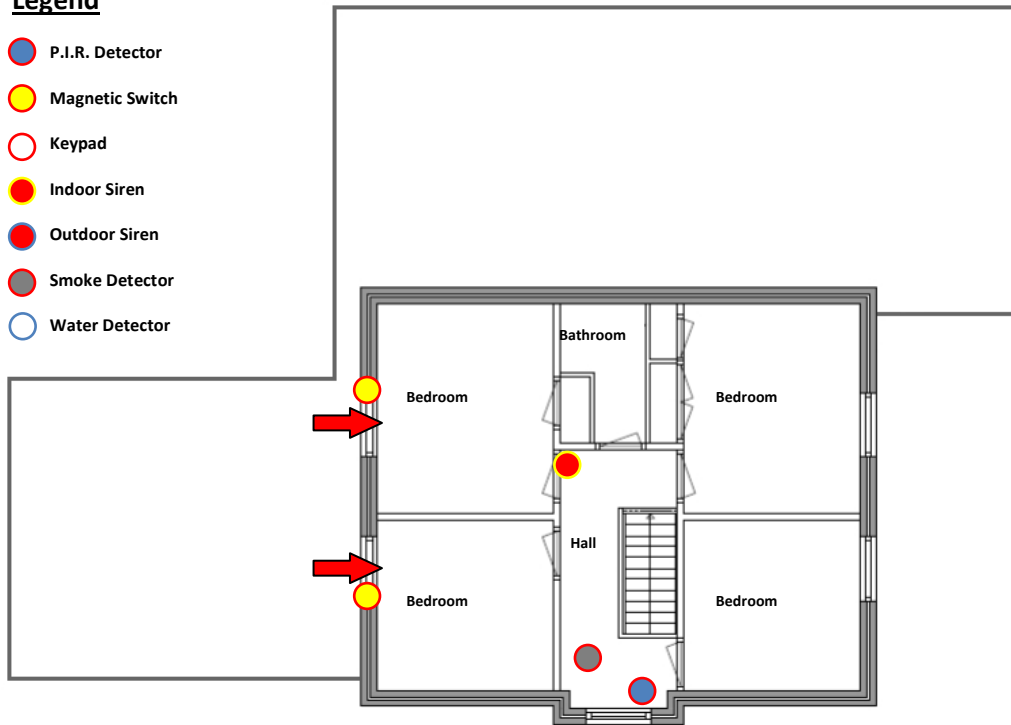
Install Motion Sensors and Magnetic Contact Sensors on the place you think they are the most effective! Motion Sensors secure a complete Area of 110° x 10 meter. Install in the rooms which are attractive for the burglar a Motion Sensor. Don't point the Sensor to windows or heaters! When a Motion Sensor registers Motion it will give a signal to the main unit. Magnetic Contact Sensors secure one door or window. Install on the doors or windows which are interesting for the burglar a Magnetic Contact Sensor. When a door or window is opened, it will give a signal to the main unit.

Advice:

We advise to make a drawing of your home and mark the burglary sensitive points with a red arrow! When you have done this you are going to fill in where you want to install motion- and magnetic sensors! When you have filled in all sensors, you mark them if you want them active at night, or only when you are out. We advise to install also minimum a indoor siren, on a strategic place. In case of burglary everybody in the house must be warned. Depending on the neighbourhood it is also wise to install an outdoor siren! They are all wireless, so easy to install. If you live with more persons in one house, or doesn't like to take the remote, or open the app everytime to activate or deactivate the system, then we advise to add a keypad! You can give per person a code, so you can always see who activated or deactivated the system! For total security of your home you also can add; smoke- and waterdetectors and a connected to your alarm system Internet camera!

Legend

-  P.I.R. Detector
-  Magnetic Switch
-  Keypad
-  Indoor Siren
-  Outdoor Siren
-  Smoke Detector
-  Water Detector

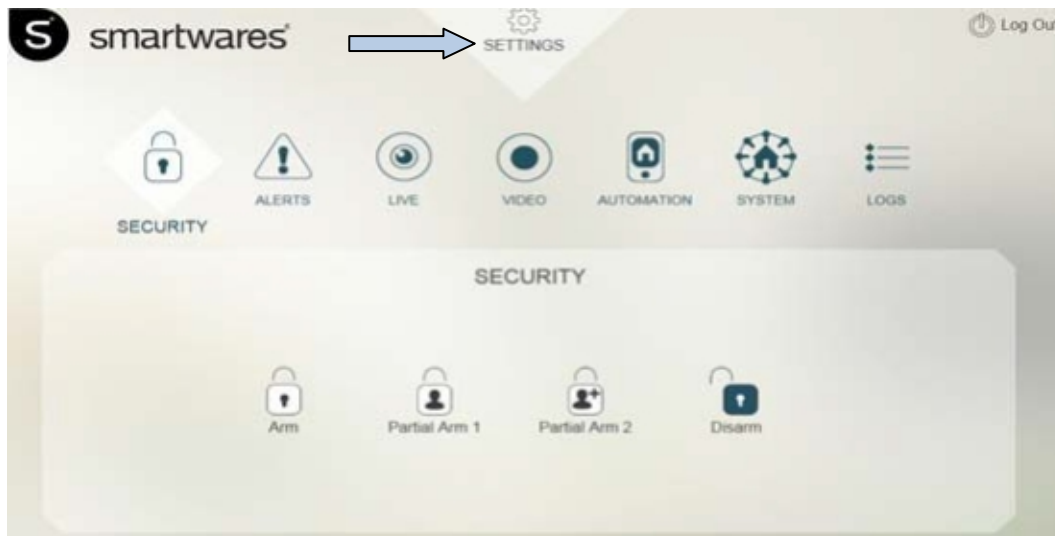


important:

The PIR/Motion sensor has a battery saving mode! This means that the Motion Sensor is always ready for triggering. And it will always send a signal to the main unit after it is triggered! After the Motion sensor is triggered, and the alarmsystem is on, the siren will go for 3 minutes! The Motion Sensor will get in "safe battery - mode" for 3 minutes, and will react again when it is triggered after 3 minutes! ALSO IN TEST MODE YOU HAVE TO WAIT 3 MINUTES AFTER EVERY TRIGGER!

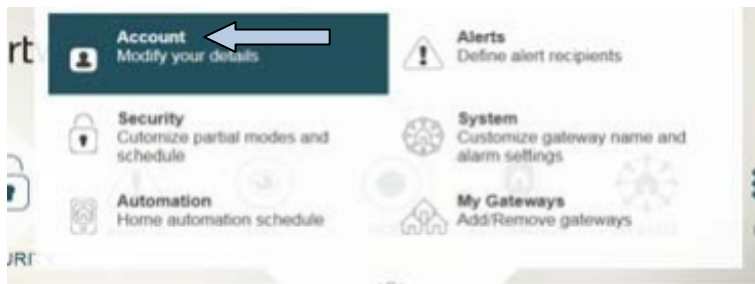
Step 18:

Personalising the System Settings; click on "Systems"



Step 19:

Click on: "Account"



Step 20:

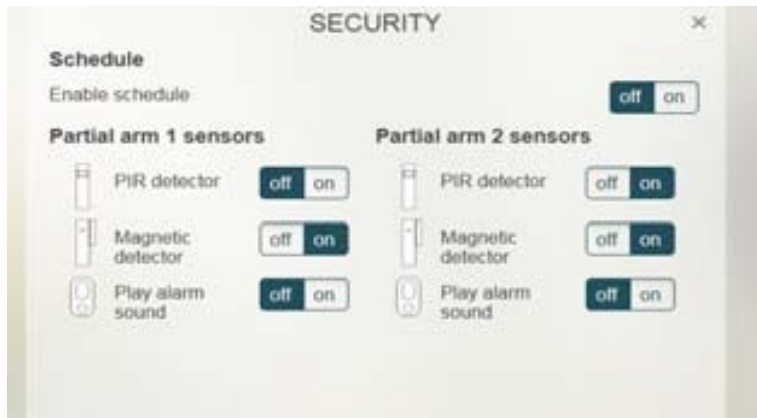
Here you can fill in, if you want, your personal data

The image shows a form titled 'ACCOUNT' with a close button (X) in the top right corner. The form contains the following fields: 'Login' with the value 'smartwaresguest@gmail.com', 'Title' with a dropdown menu showing 'Mr', 'First name' (empty), and 'Last name' (empty).

Step 21:

Close the account, and click on: "Security". Here you can define which detectors has to be armed in which mode! You have the opportunity to arm all detectors, or partial! For example: When you are at home you only arm the Magnet contacts on

the outdoor. When you are going to sleep, you arm also the Motion sensors in the living, and the kitchen, but not upstairs. When you leave, you arm all! It is also possible to choose for loud or silent alarm, per partial mode!



Step 22:

Automation is under development!



Step 23:

Click on: "Alerts" and define your emailrecipients! Here you can fill in the 2 emailaddresses to which you would like to have send the alerts, or logs.

Step 24:

Customize the name of your system and alarm settings : exit and entry delays! When you have bought a keypad, you can enter your personal pass-code here! From then you can also activate or deactivate your system by the keypad, with the code you have chosen and entered here!



Step 25:

If you want to install more Smartalarms, or control! You can add here the other Smartalarms or remove. When you click on: "My Gateways"you can add or remove gateways It is possible to control more gateways, by one app!



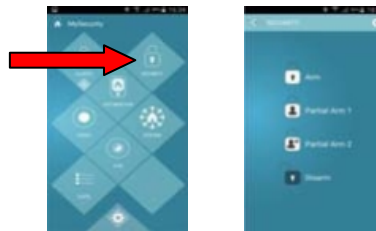
Step 26:

Now we have installed everything, and go for the more funny part! We are going to download and install our

"MYSECURITY" - app in the Play- or Apple store, and will enter the Smartalarm world!

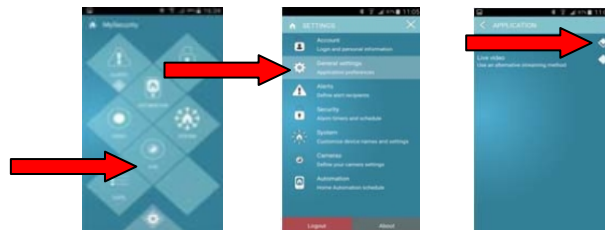
Step 27:

Open the app:
In the app, you will see the same functions as you see on the web-site. Only the lay-out is different. If you want to activate, or deactivate; you touch "SECURITY"



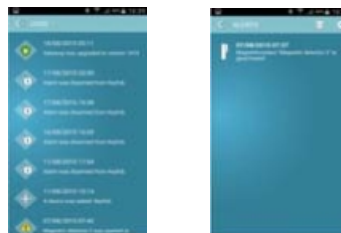
Step 28:

If you want to receive notifications on your mobile device (receive a warning); settings, general settings and mark "vibrate on alerts"



Final:

If you want to check what you have done, you can look in the log- or the alert file!



Dear User:

Here ends our trip!
Everything is installed, and adjusted to your wishes.

If you want to make changes, add, or delete things you can do this either in the web-ui, or the app! We hope you enjoyed the trip, and that the Smartalarm will bring you the safety you may expect. If you have any remarks, ideas, don't hesitate, contact us and send an email to:

service.smartwares.eu



EN PRODUCT GUARANTEE

This product has factory warranty according to EU regulations. Guarantee lasts for the number of years shown on the packaging, starting from the date of purchase. Keep the receipt - proof of purchase is required in order to rely on guarantee. In the case of problems, please contact with the store where you purchased the product. For further product information call to our Hotline or visit our website: www.smartwaressafetylighting.eu.

DISPOSAL



Correct Disposal of This Product (Waste Electrical & Electronic Equipment) (Applicable in the European Union and other European countries with separate collection systems). This marking shown on the product or its literature, indicates that it should not be disposed with other household wastes at the end of its working life. To prevent possible harm to the environment or human health from uncontrolled waste disposal, please separate this from other types of wastes and recycle it responsibly to promote the sustainable reuse of material resources. Household users should contact either the retailer where they purchased this product, or their local government office, for details of where and how they can take this item for environmentally safe recycling. Business users should contact their supplier and check the terms and conditions of the purchase contract. This product should not be mixed with other commercial wastes for disposal.



- * Always throw empty batteries to the battery recycling bin.
- * If the battery is built-in inside the product, open the product and remove the battery.

MAINTENANCE



The devices are maintenance-free, so never open them. The guarantee becomes void when you open the appliance. Only clean the outside of the devices with a soft, dry cloth or a brush. Prior to cleaning, remove the devices from all voltage sources. Do not use any carboxylic cleaning agents or petrol, alcohol or similar. These attack the surfaces of the devices. Besides, the vapors are hazardous to your health and explosive. Do not use any sharp edged tools, screw drivers, metal brushes or similar for cleaning. Warning: Protect the battery against fire, too much heat and sunshine

GENERAL SAFETY

- * Clean with a clean, dry cloth or brush, use no solvents or abrasives. Avoid dampness on all electrical components.
- * Keep all parts out of the reach of children.
- * Avoid a wet, very cold or warm environment; this may damage electronic circuit boards.
- * Avoid dropping or shocks, this may damage the electronic circuits.
- * Repairs or opening of this item may only be done by an authorized repairer.
- * Wireless systems can be interference from cordless phones, microwave ovens and other wireless devices operating in the 2.4GHz range. Keep the system AT LEAST 3m away from the devices during installation and operation.
- HIGH VOLTAGE**
- * All electrical connections and connection cables must comply with the appropriate rules and match the operating instructions.
- * Do not overload electrical outlets or extension cords; this could otherwise result in fire or electric shock.
- * Never replace damaged power cables yourself! In this case, remove them from the net and take the devices to the store.
- * The fitting must be correctly installed if it is to operate reliably. These instructions and the user guide must therefore be studied carefully.
- * The electrical supply must be switched off at the outset, preferably by means of a switch in the distribution box, before any installation, maintenance or repair work is undertaken.
- * Exterior lighting must not be installed during rain.
- * Take account of the minimal separation distance from other objects and the room required around the fitting.
- * Install the fitting as indicated in the user guide.
- * If in any doubt consult a professional, taking local installation requirements into account. Some countries stipulate that lighting may be installed only by registered installers.
- * Clamping screws in electrical connections must be adequately tightened. This is particularly the case with 12V low voltage conductors.
- * Take note of the symbols when connecting wires:
N = Neutral / L = Phase / ⊕ = Earth / LS = Live, switched
- * When replacing a halogen lamp, wait for it to cool, for a minimum of 5 minutes.
- LOW VOLTAGE**
- * Keep batteries out of the reach of children. Batteries not swallow. When a cell or battery is swallowed, call a physician immediately.

DECLARATION OF CONFORMITY

For DoC go to: service.smartwares.eu/doc and follow instructions.

smartwares[®] safety & lighting B.V. Jules Verneweg 87 5015 BH Tilburg The Netherlands service.smartwares.eu	NL : 0900-2088888 Lokaal tarief	CUSTOMER SERVICE
	BE : 070-233031 (NL) Lokaal tarief	
	: 0800-97570 (FR) Gratuit	
	FR : 0825 560 650 15ct/min	
	DE : +49 (0) 1805 010762 14Ct./Min. dt. Festnetz, Mobil max. 42Ct./Min	
UK : +44 (0) 345 230 1231		
ES : +34 938427589		